



# 1 Green Lane

Whitwick, Coalville, LE67 5ED

£280,000

Situated in a highly desirable, private and quiet position on Green Lane in Whitwick, this exceptionally well-presented and thoughtfully extended three-bedroom semi-detached house offers an ideal family home with generous living space, modern comforts, and excellent outside amenities.

Upon arrival, the property benefits from a welcoming entrance porch leading into a practical hallway. To the front lies a dedicated office/study, perfect for those working from home or needing a quiet space. The real heart of the home is the extremely spacious wraparound open-plan living/kitchen/dining room – a superb extension that has been cleverly designed to create a bright, sociable hub ideal for family life and entertaining. The kitchen area is well-equipped and flows seamlessly into the dining and living zones, with ample natural light from multiple aspects and direct access to the rear garden. To the rear, a versatile garden room provides additional flexible living space – whether used as a playroom, home gym, or relaxed sitting area overlooking the garden.

Upstairs, the accommodation comprises three good-sized double bedrooms, all benefiting from fitted wardrobes or storage options. The principal bedroom features a modern en-suite shower

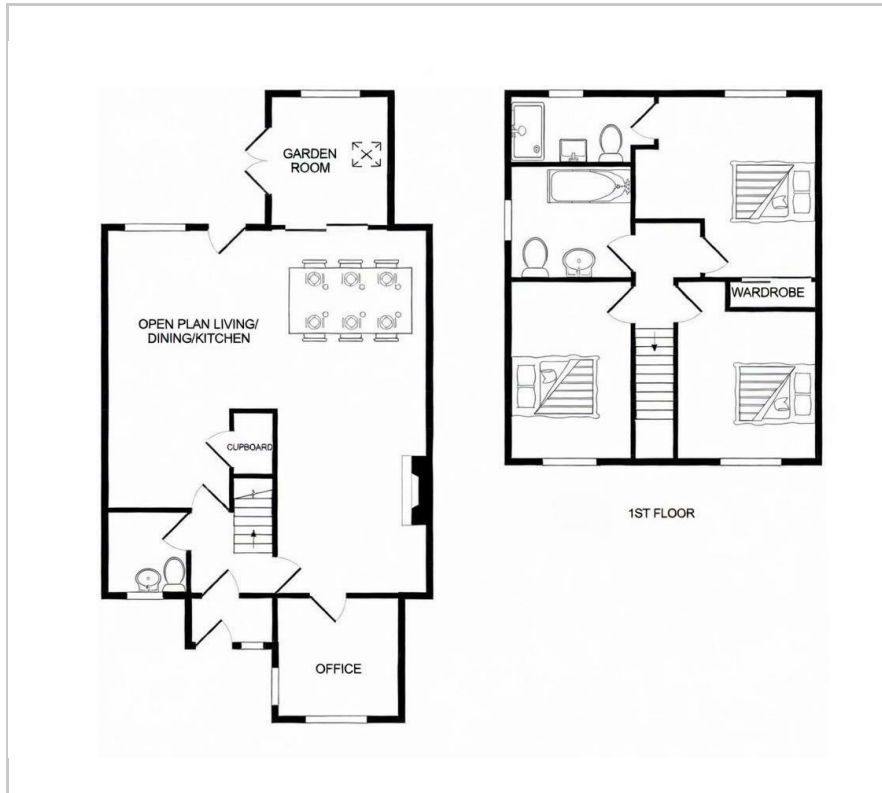
### Viewing

Please contact our Berkley Leicester Office on 0116 2544755 if you wish to arrange a viewing appointment for this property or require further information.



3
 2
 2
 C

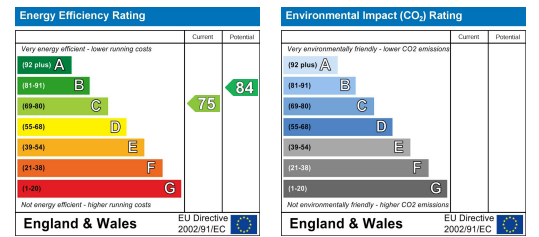
# Floor Plan



# Area Map



# Energy Efficiency Graph



These particulars, whilst believed to be accurate are set out as a general outline only for guidance and do not constitute any part of an offer or contract. Intending purchasers should not rely on them as statements of representation of fact, but must satisfy themselves by inspection or otherwise as to their accuracy. No person in this firm's employment has the authority to make or give any representation or warranty in respect of the property.